

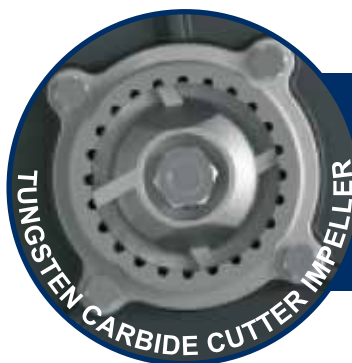


## CUT | SUBMERSIBLE CUTTER PUMP

CUT Submersible Cutter Pump is designed with a “Cutter Mechanism” system which cuts solids & fibrous foreign materials into small pieces so that they can be led away through pipes of a relatively small diameter. The compact design makes the pumps suitable for both temporary and permanent installations, the pumps can be installed on an auto-coupling system or stand freely on the bottom of the pit.

### APPLICATIONS

- Designed for domestic, commercial & industrial use.
- Draining sewage from restaurants, hotels, camping sites, etc.
- Suitable for using with dirty water that is not chemically aggressive
- Clearing dirty water, discharging domestic waste water, and for emptying collection traps containing particle.
- Torsion up to 5 times avoid being blocked.



*Saw-shaped fixed blades are used in combination with a tungsten carbide blade in an impeller integrated structure. This construction ensures that fibrous foreign matter is cut up, and sewage is transferred without clogging.*



LOW MAINTENANCE



ENERGY SAVING



STRONG & DURABLE



OVER HEATING PROTECTION

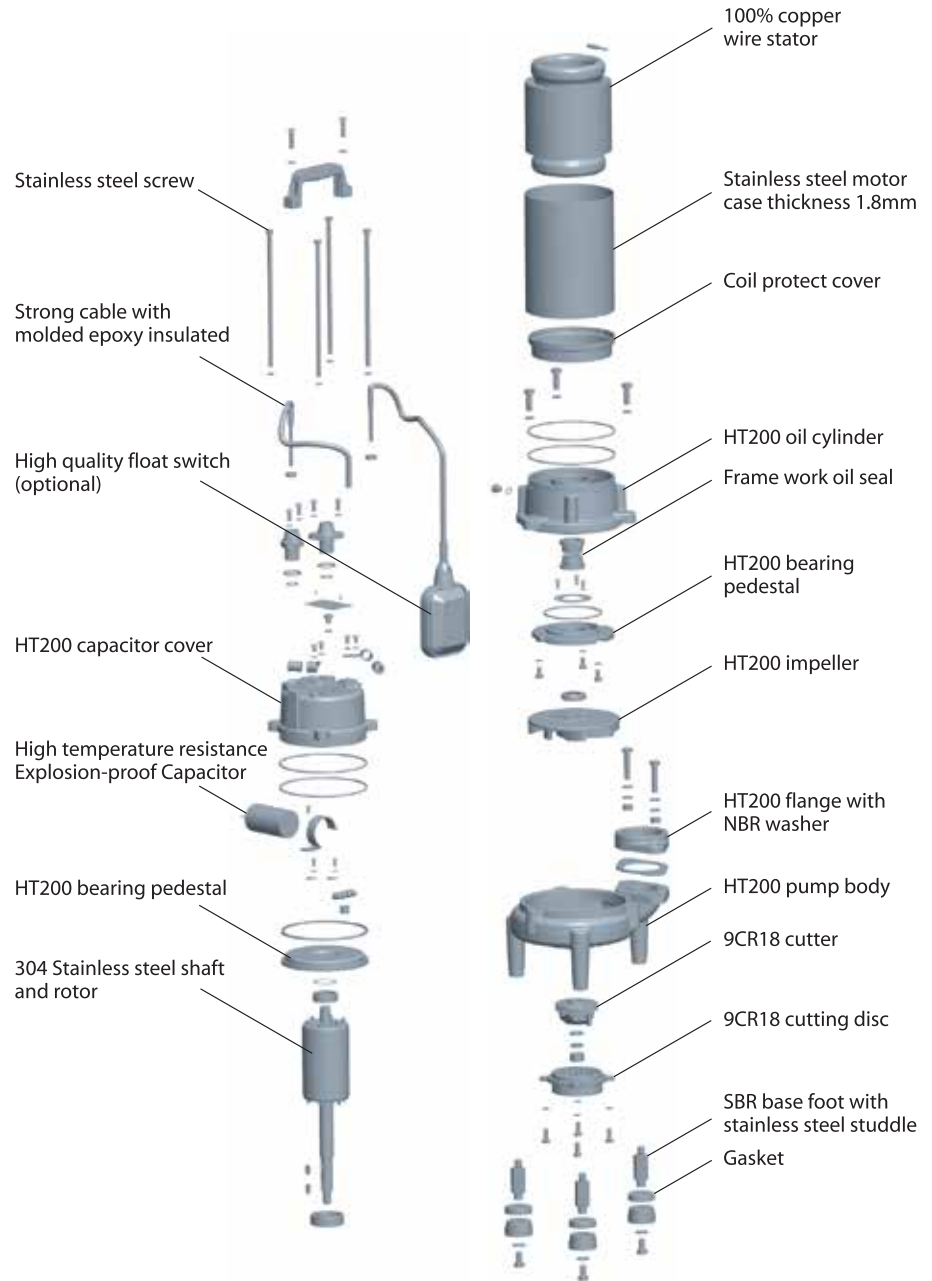


LOW NOISE OPERATION



ANTI-RUST PUMP SHELL

# CUT | SUBMERSIBLE CUTTER PUMP



**SPECIAL CUTTER STRUCTURE**

**EXCELLENT CUTTING ABILITY**

## SPECIFICATION

- HT200 Impeller
- AISI 304 shaft (Options Available)
- Motor with copper winding and thermal protector
- SUS440C cutter hardness achieve HRC55-60
- VCT cable silicon carbide mechanical seal
- Insulation Class: B
- Protection Class: IP68
- Single phase, 240V/50Hz
- Continuous work

## TECHNICAL & PERFORMANCE DATA

| Model        | Motor Power (Kw) | Max Head (m) | Max Flow (m <sup>3</sup> /min) | Outlet Dia. (mm) | Voltage |
|--------------|------------------|--------------|--------------------------------|------------------|---------|
| CUT-1500AUTO | 1.5              | 16           | 10                             | 50               | 240V    |

\*Auto, with Float Switch